

# SAMR: Meaningfully *Integrating Technology*

## Enhancing Learning

### Substitution

Technology directly substitutes a non-technology tool.

The task remains unchanged.

The tech tool doesn't alter the way ELs interact with the task.

Handwritten vs Google Doc



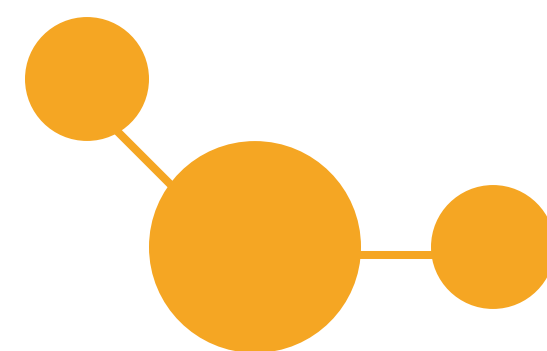
### Augmentation

Technology directly substitutes a non-technology tool.

The task remains unchanged.

The tech tool encourages the use of multimedia.

Digitally brainstorming



## Transforming Learning

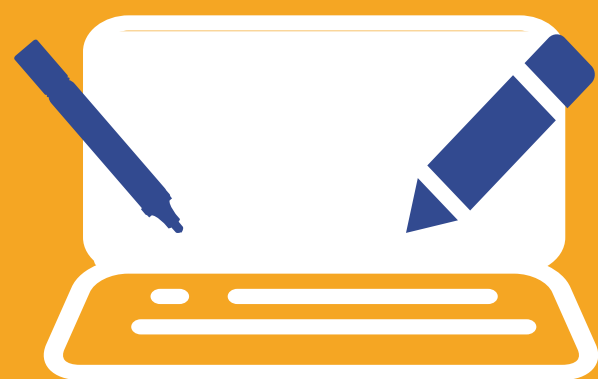
### Modification

Technology directly substitutes a non-technology tool.

The task is modified.

The tech tool facilitates collaboration.

Co-compose with others on Google Docs



### Redefinition

Technology directly replaces a non-technology tool.

The task is significantly redesigned.

The tech tool empowers ELs to create something that was previously inconceivable.

Create & tweet infographics

